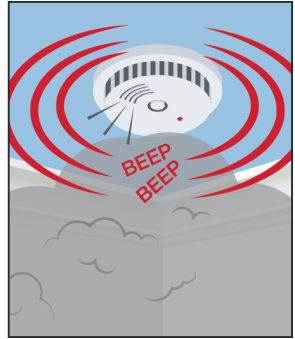


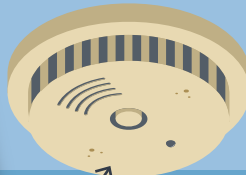


# SMOKE ALARMS

Required by Law



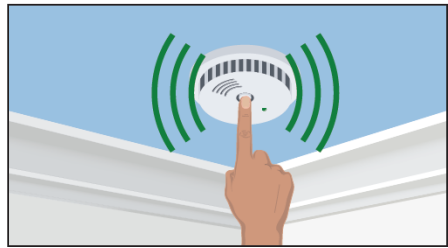
Smoke alarms beep loudly when there is a fire



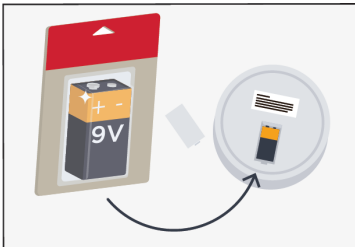
**10**  
**YEARS**

Replace smoke alarms at least every 10 years

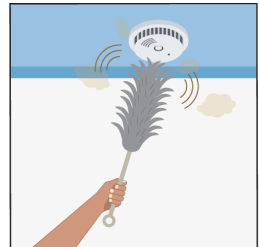
JAN	FEB	MAR	APR
⊗	⊗	⊗	⊗
MAY	JUN	JUL	AUG
⊗	⊗	⊗	⊗
SEP	OCT	NOV	DEC
⊗	⊗	⊗	⊗



**Test** every month

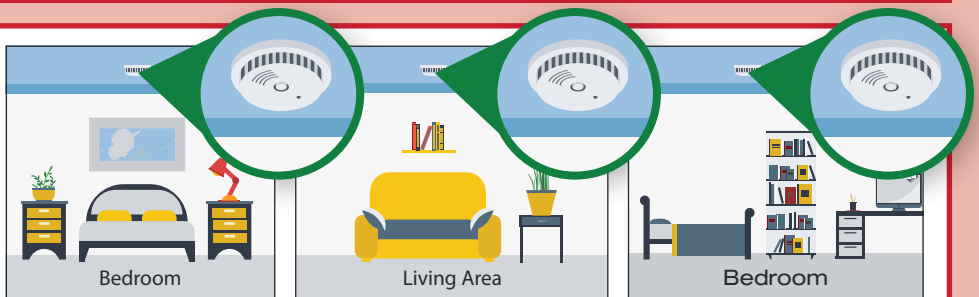


FEB	MAR	APR
		⊗
JUN	JUL	AUG
OCT	NOV	DEC



**Replace** 9 volt batteries every year

**Clean** every year



You should have a working smoke alarm in every bedroom and living area



You should connect your smoke alarms to each other so that when one sounds, they all sound. We call this **interconnected**